

## **Figures**





- Community
- Connected Community
- Parks, Preserves and Refuges
- Highway
- Terrestrial Corridor
- River Corridor
- Canyon Bypass Corridor



DEPLOYCOM, LLC

## ALASKA FIBEROPTIC PROJECT PROJECT OVERVIEW

SCALE:

FIGURE:  
**1**





Figure 2. Typical mulching equipment.



Figure 3. Typical vibratory plow.

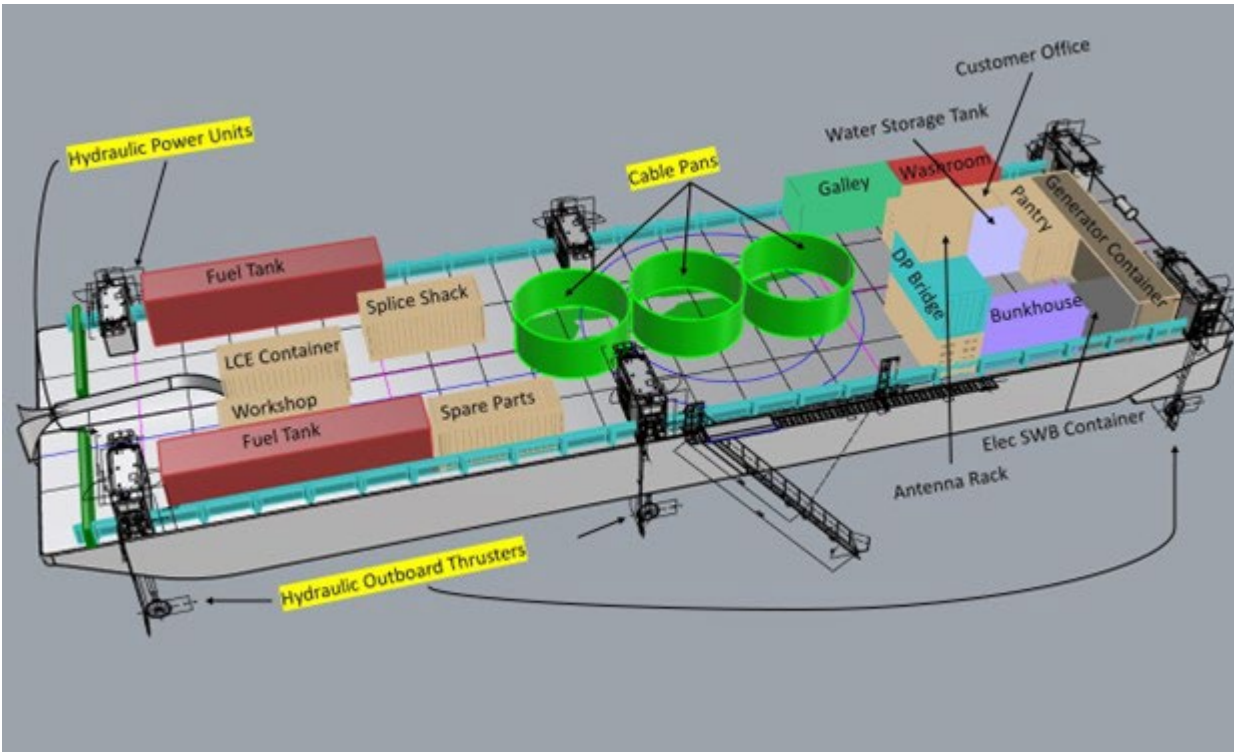


Figure 4. Graphic of the cable lay barge (CLB).

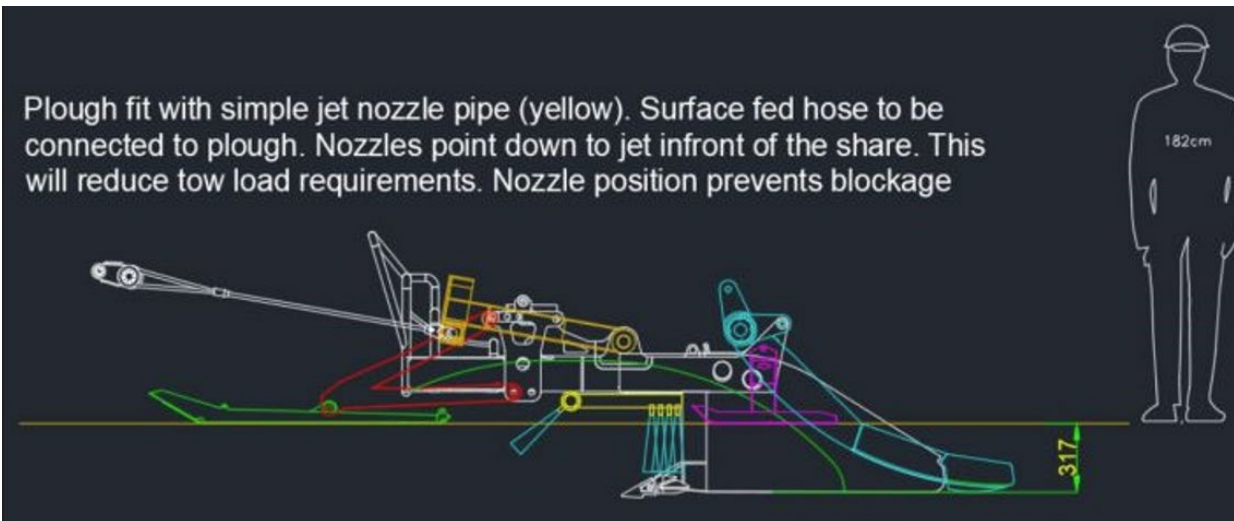


Figure 5. Graphic of the scratch plow.





Figure 6. Graphic of the jet plow.

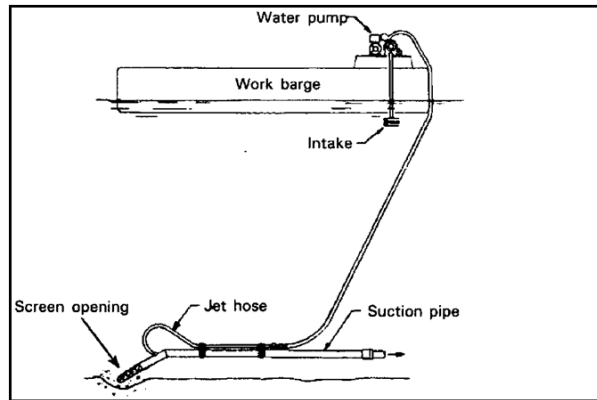


Figure 7. Photo and graphic examples of diver jetting.



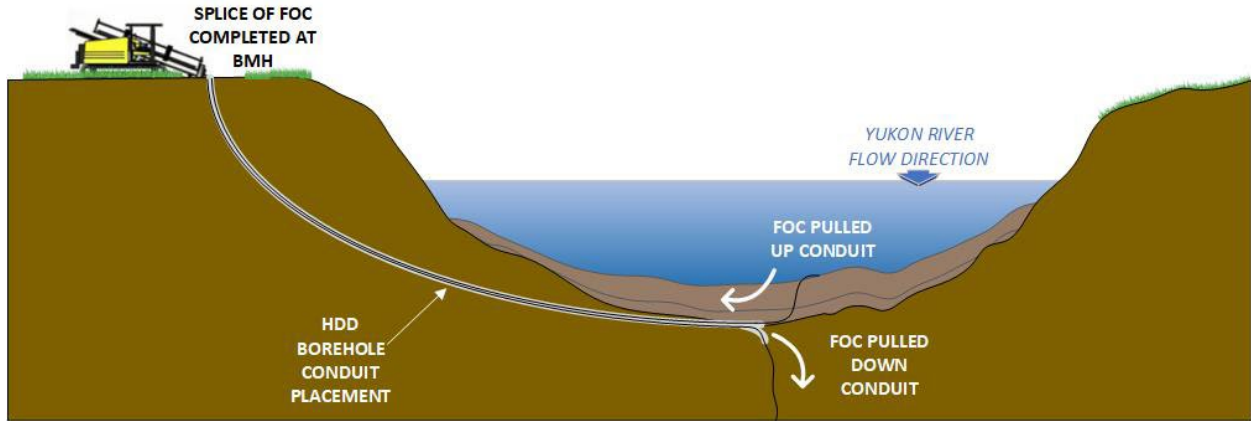


Figure 8. Graphic of horizontal directional drilling.



Figure 9. Typical all terrain Ditch Witch.



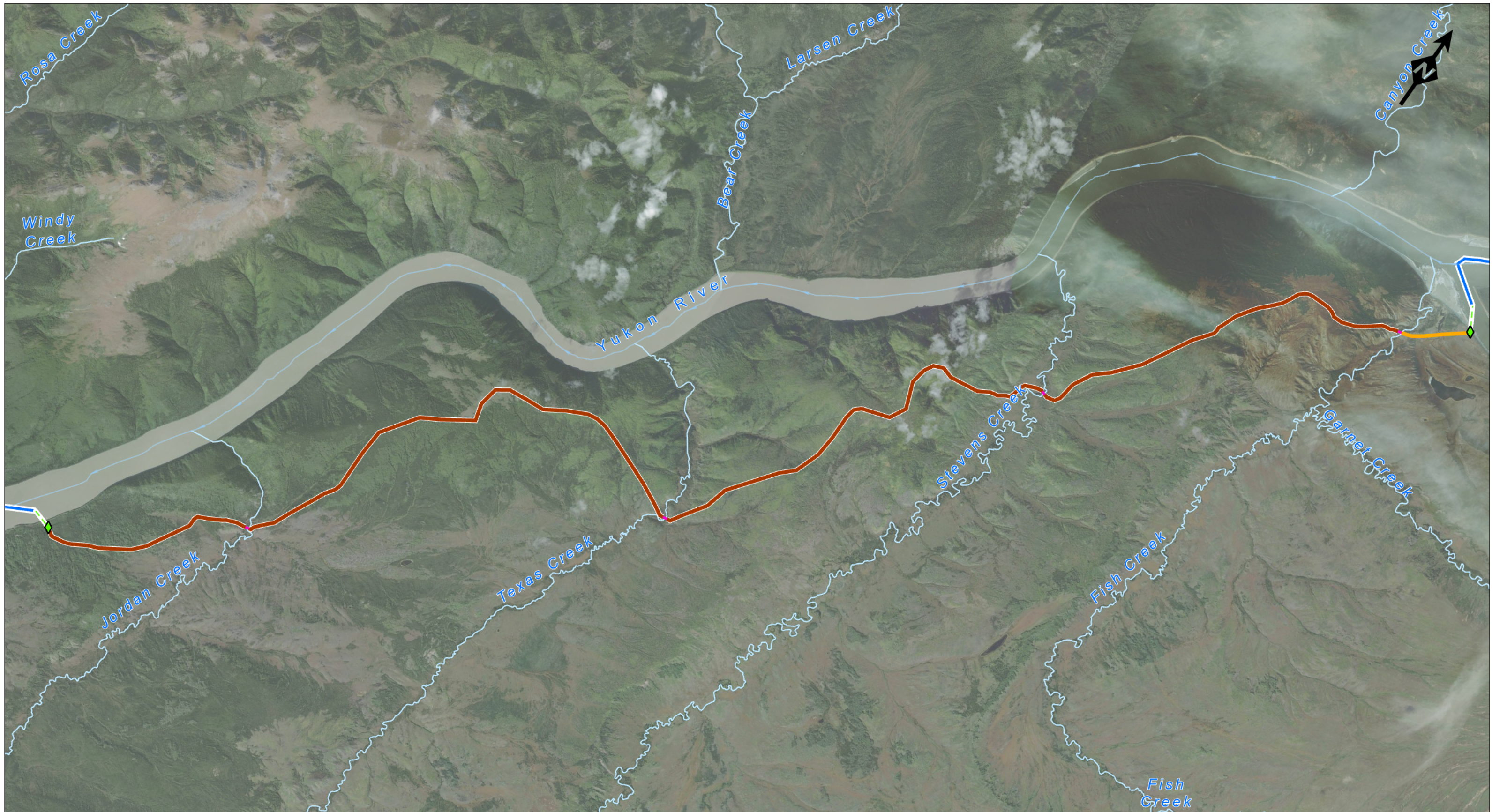


Figure 10. Photo of a typical beach manhole (BMH).

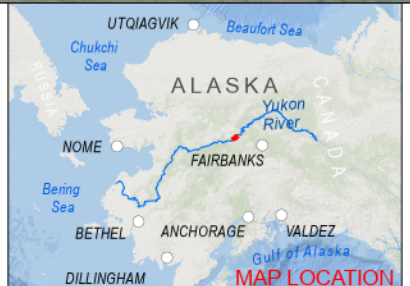
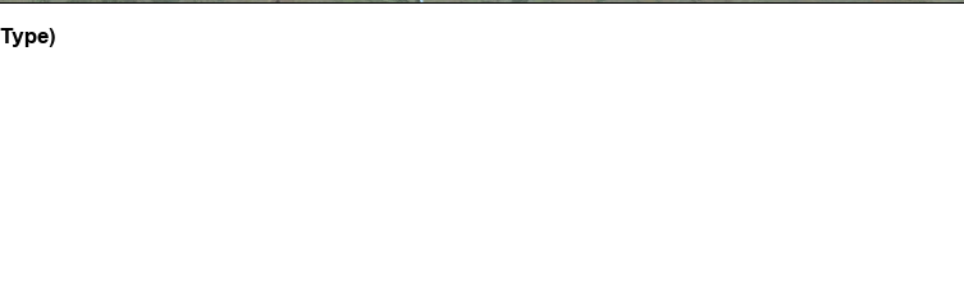


Figure 11. Photo of a typical communications shelter.





<b>Alignment (Install Type)</b>		<b>Overland Bypass (Install Type)</b>	
	Scratch Plow		HDD Bore
	Approximate Fiber Optic HDD Bore Alignment		Summer Trench
	Proposed BMH and HDD Location		Surface Lay



DEPLOYCOM, LLC

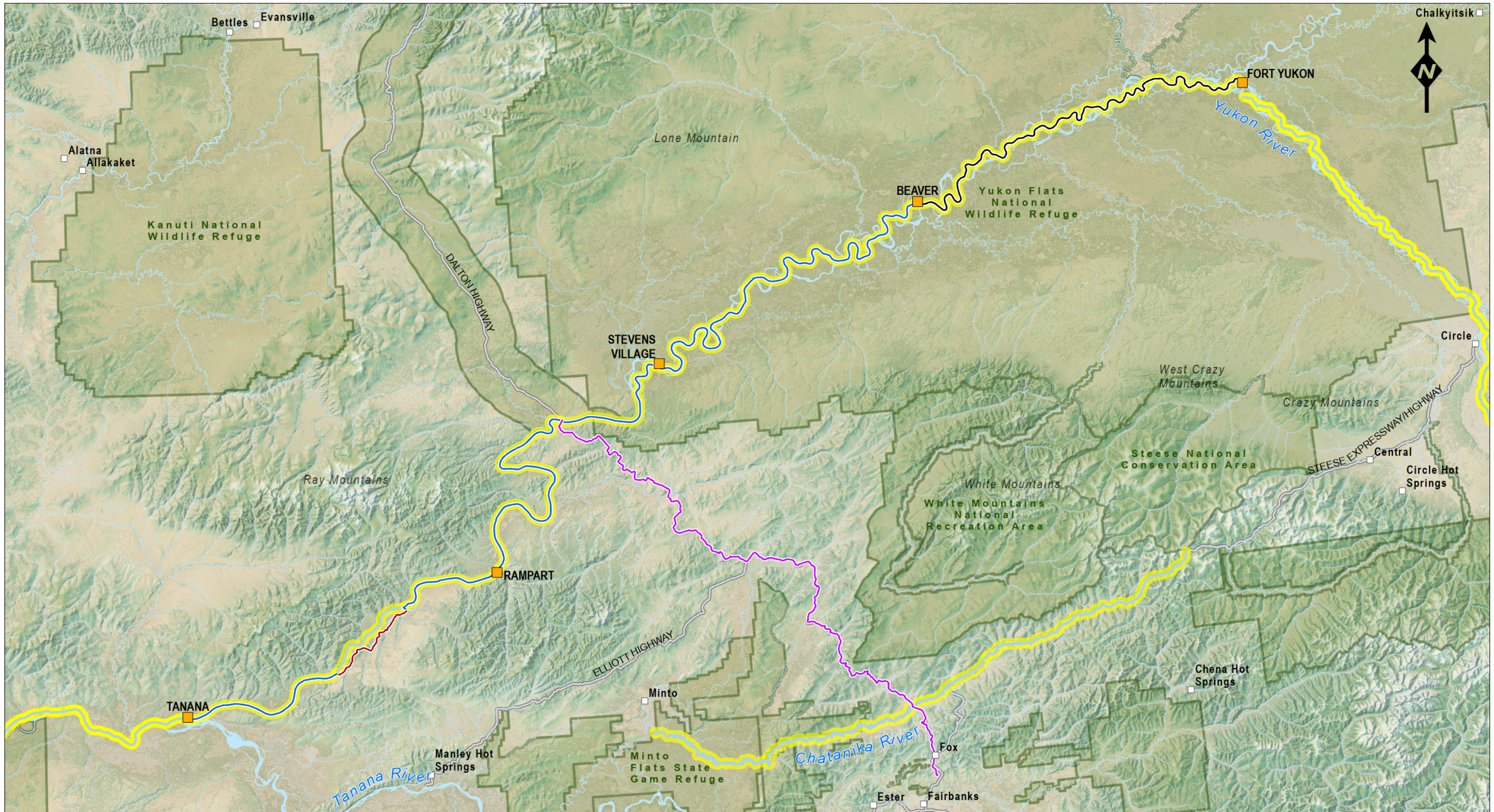
**ALASKA FIBEROPTIC PROJECT  
CANYON BYPASS  
(TERRESTRIAL)**

SCALE:

FIGURE:  
**12**

DEPLOYCOM\_0069.aprx, 3/7/2024 8:50 AM, R01





- Alignment (Install Type)**
- ~ Scratch Plow
  - ~ Canyon Bypass (Terrestrial)
  - ~ Jet Plow
  - ~ Terrestrial
  - ~ Navigable Portions of Yukon and Chatanika Rivers

- Community
- Connected Community
- Parks, Preserves and Refuges
- Highway



DEPLOYCOM, LLC

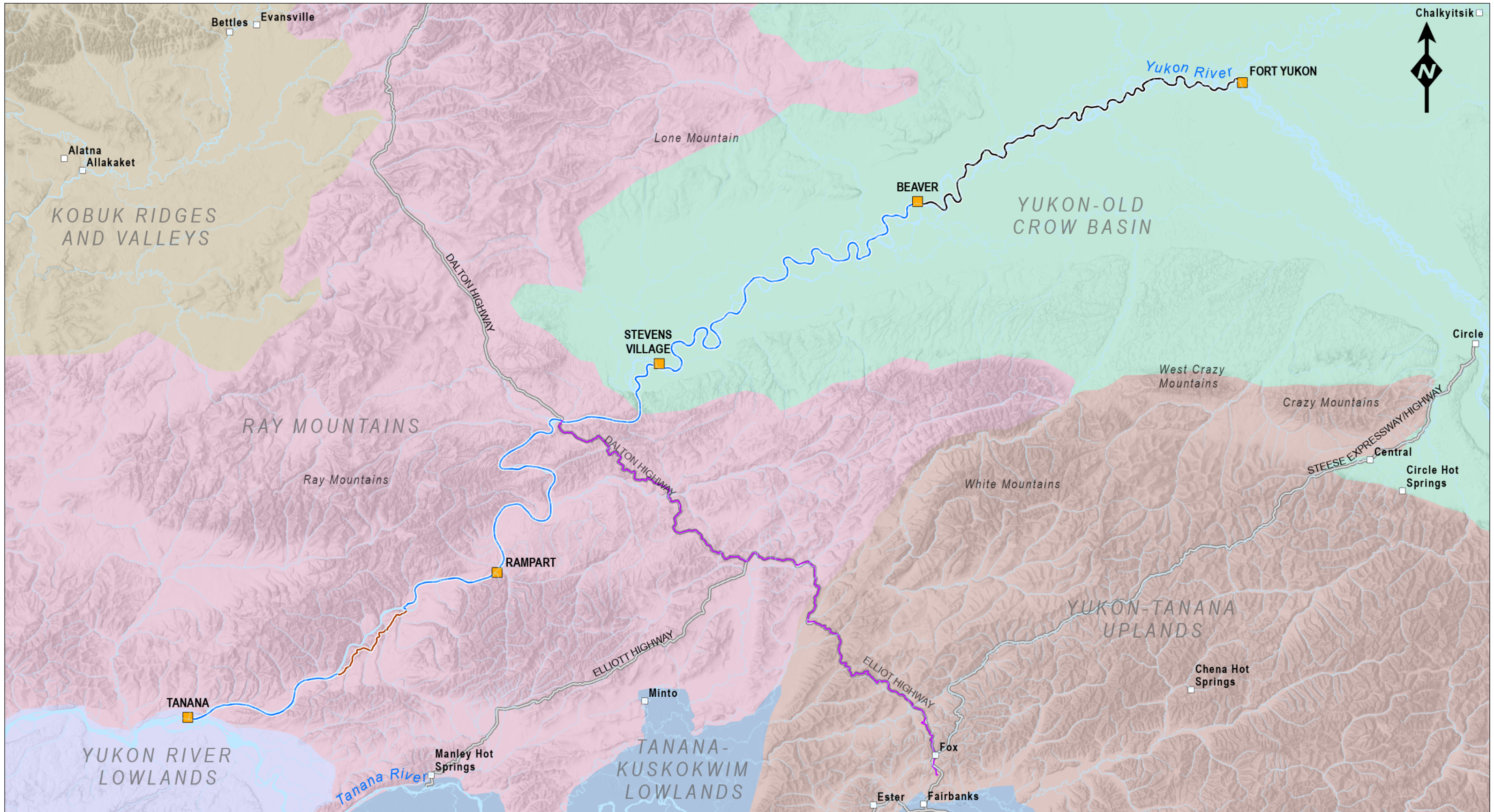
### ALASKA FIBEROPTIC PROJECT FORT YUKON TO TANANA (IN RIVER) NAVIGABLE WATERS

SCALE:  0 5 10 20 Miles  
 0 10 20 40 Kilometers

FIGURE: 13

DEPLOYCOM\_0121.aprx, 3/11/2024 10:26 AM, R01





- Community
  - Connected Community
  - Highway
- Alignment (Install Type)**
- Scratch Plow
  - Canyon Bypass (Terrestrial)
  - Jet Plow
  - Terrestrial

- Ecoregion Name**
- Kobuk Ridges and Valleys
  - Ray Mountains
  - Tanana-Kuskokwim Lowlands
  - Yukon River Lowlands
  - Yukon-Old Crow Basin
  - Yukon-Tanana Uplands



DEPLOYCOM, LLC

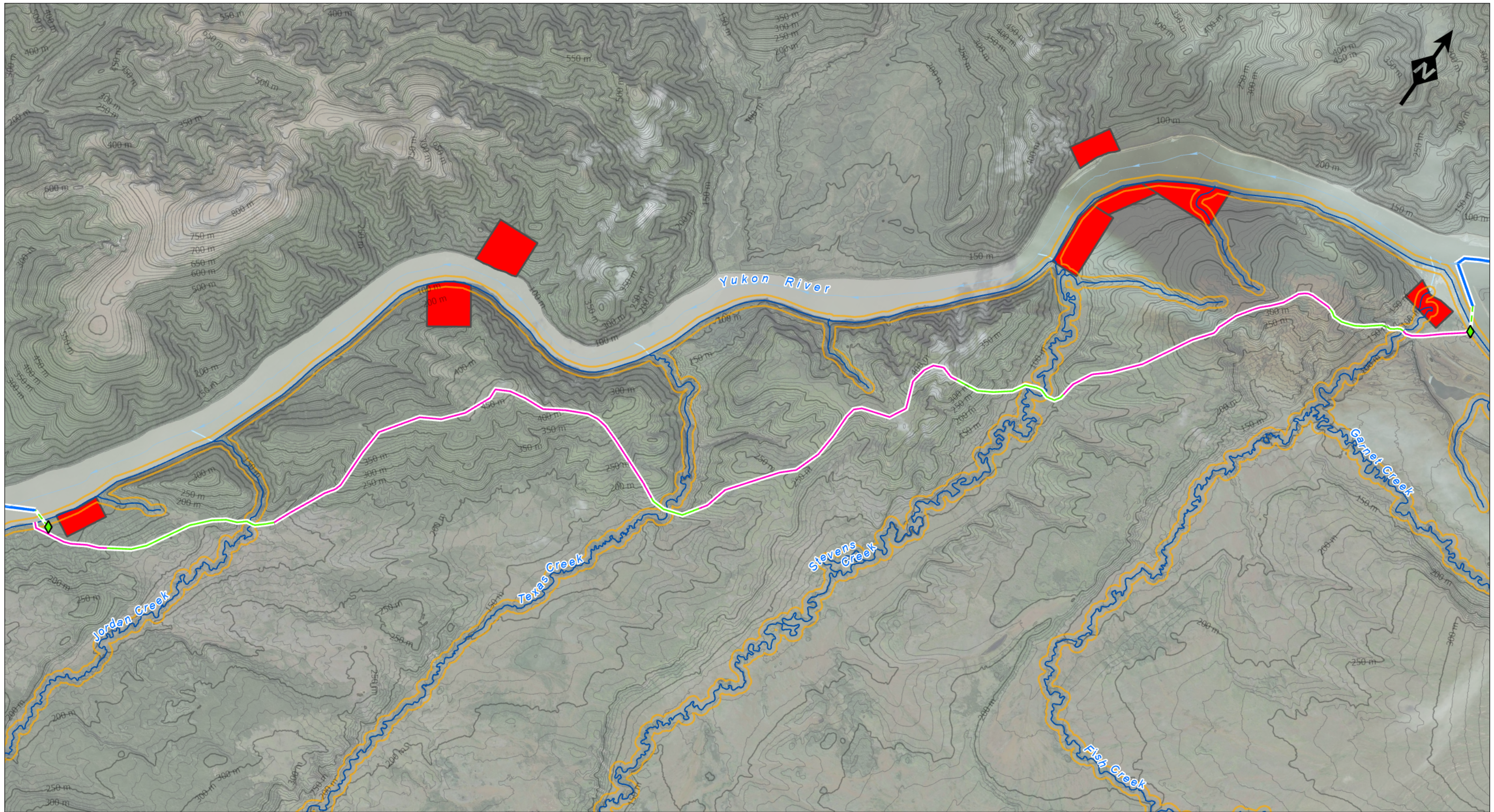
## ALASKA FIBEROPTIC PROJECT ECOREGIONS

SCALE:

FIGURE:  
**14**

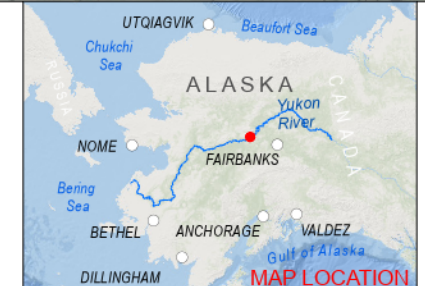
DEPLOYCOM\_0074.aprx, 3/7/2024 9:14 AM, R02





- IFSAR Contour (50 m)
- NHD Stream/River
- Native Allotment
- NHD Stream/River 100 meter buffer

- Cultural Probability**
- Low
  - Moderate/High
- Alignment (Install Type)**
- Scratch Plow
  - Proposed HDD Bore Alignment
  - Proposed BMH and HDD Location



DEPLOYCOM, LLC

**ALASKA FIBEROPTIC PROJECT  
CANYON BYPASS (TERRESTRIAL)  
CULTURAL RESOURCE  
PROBABILITY AREAS**

SCALE: 	FIGURE: <b>15</b>
------------	----------------------