

NAVIGATING THE TELEHEALTH NEIGHBORHOOD: GUIDES AND RESOURCES FOR DIGITAL HEALTH INCLUSION

**Jaleen
Johnson**

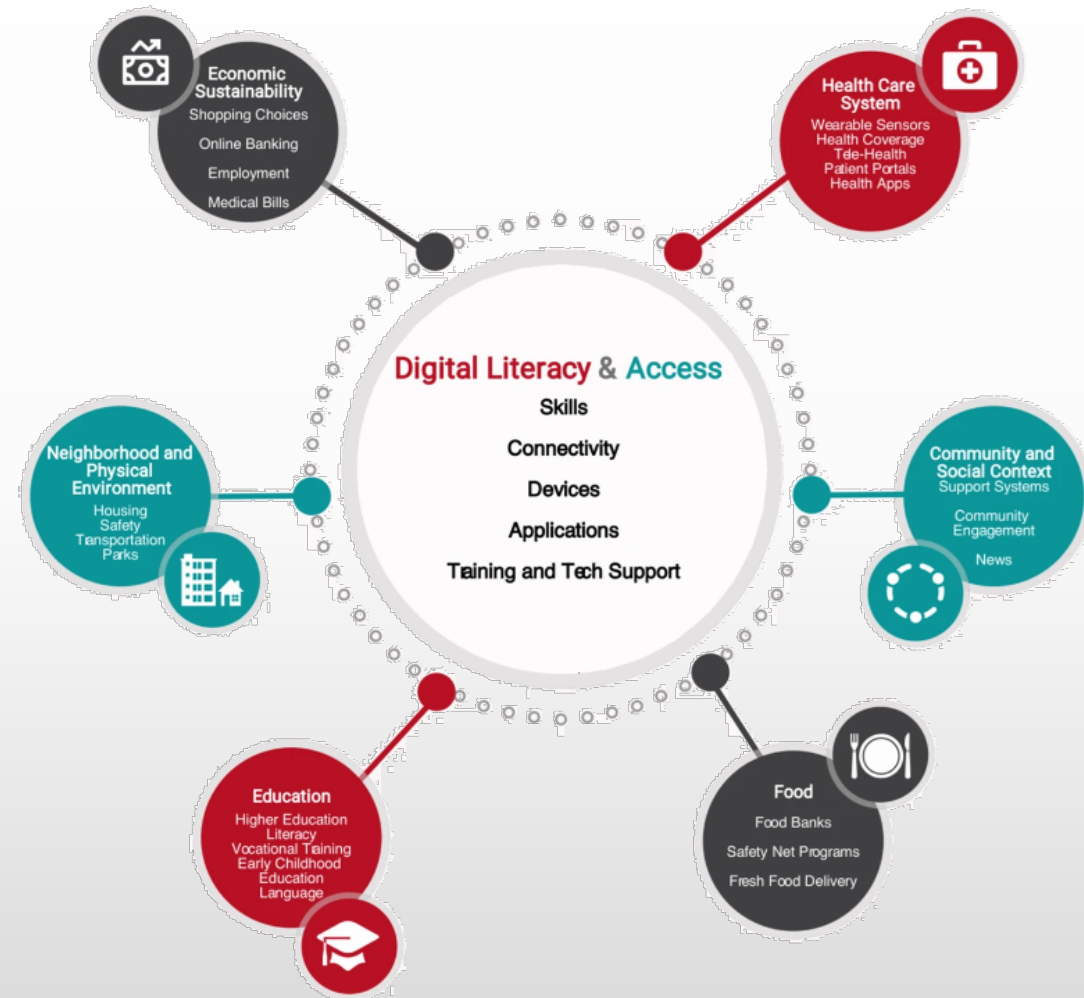
She/Her/Hers
Programs Manager,
UETN and NRTRC
Digital Inclusion Fellow,
NTEN



uetn
UTAH EDUCATION AND
TELEHEALTH NETWORK

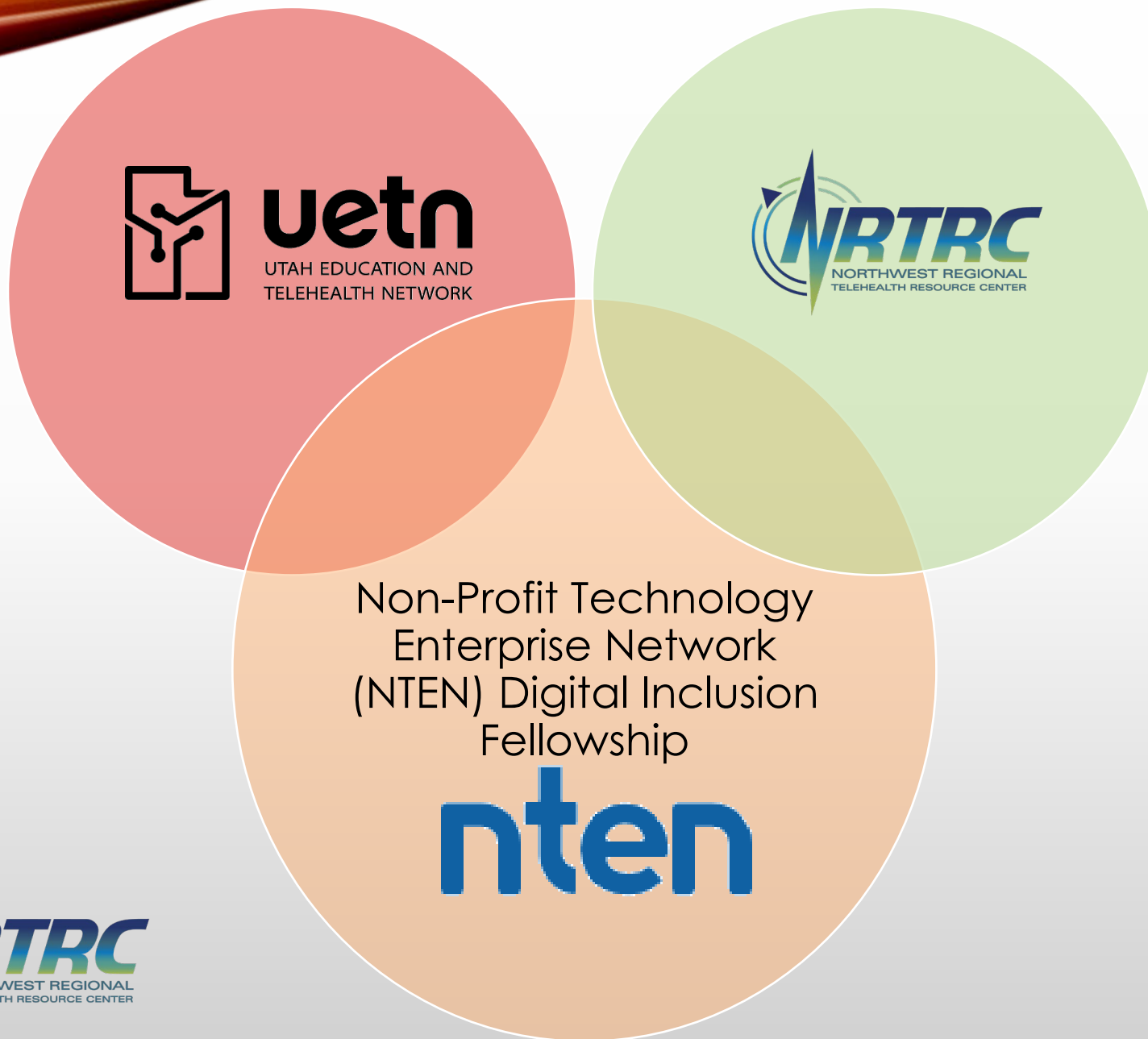


- Applications for employment and social services are increasingly and exclusively online
- Sources of health information and patient portals have been digitized
- Increased use of telehealth widening disparities
- Costs of equipping a person to use the Internet and devices to manage healthcare are more sustainable than treating active conditions





OUR PROJECT: THE NTEN DIGITAL INCLUSION FELLOWSHIP



uetn
UTAH EDUCATION AND
TELEHEALTH NETWORK



NRTRC
NORTHWEST REGIONAL
TELEHEALTH RESOURCE CENTER

The Utah
Education and
Telehealth
Network (UETN)

The Northwest
Regional
Telehealth
Resource
Center (NRTRC)

Non-Profit
Technology
Enterprise
Network (NTEN)
Digital Inclusion
Fellowship



NAVIGATING the TELEHEALTH NEIGHBORHOOD

A Guide to Telehealth Access for Digital Navigators



Training is Live



**Telehealth
Access Points
are now live at:**

findtelehealth.nrtrc.org

TAPs



SCAN THIS CODE TO SUBMIT A TAP!

NAVIGATING the TELEHEALTH NEIGHBORHOOD

A Guide to Telehealth Access for Digital Navigators



Training is Live



- Uses the terms “navigator” and “participant” to promote adaptability of the course
- 3 Main Sections:
 - Intro to Telehealth for Navigators
 - Telehealth Navigator and Participant Resources
 - Process maps and Participant Considerations for Telehealth Navigation



[HTTPS://NRTRC.CATALOG.INSTRUCTURE.COM/](https://nrtrc.catalog.instructure.com/)

**Telehealth
Access Points
are now live at:**

findtelehealth.nrtrc.org

TAPs



[HTTPS://FINDTELEHEALTH.NRTRC.ORG](https://findtelehealth.nrtrc.org)

[HTTPS://WIMTRACKING.COM/TAPS/](https://wimtracking.com/taps/)



THE END

info@nrtrc.org

