



Digital Inclusion and K-12 Education: The Impact of COVID-19 on Students and Educators

NTIA Webinar Series

You must dial in to hear the webinar!
Conference Line: 800-593-7190 Passcode: 984-4951#

October 21, 2020

Participants

Moderator:

- Emy Tseng, Senior Broadband Specialist, NTIA's BroadbandUSA

Presenters:

- Kimball Sekaquaptewa, Chief Technology Director, Santa Fe Indian School, Santa Fe, **New Mexico**
- Dr. Christine Diggs, Chief Technology Officer, Albemarle County Public Schools and Michael Culp, Director of Information Technology Department, Albemarle County, Virginia
- Joshua Edmonds, Director of Digital Inclusion, City of Detroit, Michigan

Helpful Information

Questions

- Please type questions in the Q&A box on the right hand side of the screen. Questions will be taken after the final presenter.

Presentation

- The presentation along with a transcript and recording will be available on the BroadbandUSA website within 7 days of this webinar under Events/past events.
- <https://broadbandusa.ntia.doc.gov/past-event>

Technical Assistance

- Guides, products, publications, and other tools are available to assist you with the planning, funding and implementation of your broadband project.
- <https://broadbandusa.ntia.doc.gov>

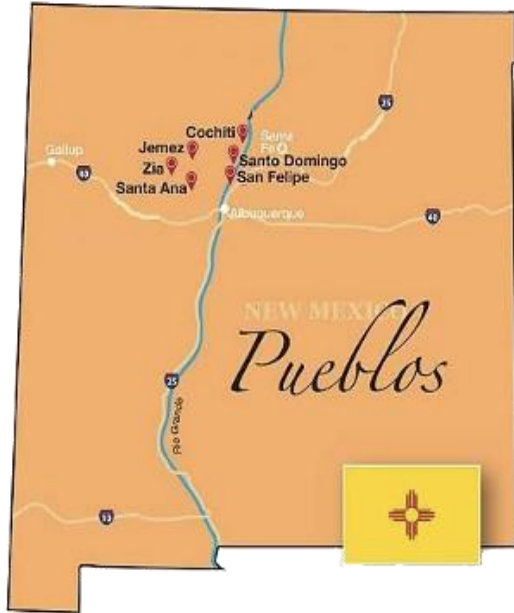
**Please dial-in to hear the webinar: Conference Line: 800-593-7190 Passcode: 984-4951#*

Kimball Sekaquaptewa, Chief Technology Director, Santa Fe Indian School





Pre-COVID State of Internet on Tribal Lands



- People: 41% of people living on tribal lands lack access to broadband, with the deficit jumping to 68% for those living in rural areas. (FCC, 2016)
- Homes: With lack of computers/Internet in homes people rely on Tribal libraries other Public Wi-Fi, expensive and often pre-paid cellular plans
- Schools: Bureau of Indian Education schools can pay significantly more than non-BIE schools in the same locations.
Ch'ooshgai Community School \$20,750/mo. vs. NM PED School District \$6,005/mo.
- Tribes: In 2020, some tribal governments in New Mexico still connect with T1s (1.5 Mbps), or about 10% of a single LTE cell phone)
- And then came COVID-19: The Digital Divide → Digital Chasm
- COVID-19 revealed the existing fault lines and puts a face to **the discrimination against students that aren't connected.**



Pre-COVID State of Internet on Tribal Lands



Santa Fe Indian School Student Connectivity

SFIS is an off-reservation boarding school that serves 702 students from the 19 Pueblos, Apache, and Navajo Tribes of New Mexico

- School Closure sent kids home to 22 rural and tribal lands, least connected in NM, and likely the US
- 44% No Home Internet
- **Students ‘find’ the Internet in many ways:**
 - 32% Use Pre-Paid Internet
 - 27% Use Public Wi-Fi
 - 21% Go to their Tribal Library
 - 8% Relative’s House or Work**
- Cellular Coverage Very Spotty
Despite the heavy reliance on mobile Internet, user experience is poor in many areas
- No Cable options on Tribal Lands

2020 COVID-19 Tribal Responses

Response	Timeframe	Technology	Pros	Cons
Immediate Rapid Response	SY19-20 School Closures	<ul style="list-style-type: none"> Cellular Hotspots A lot of Chromebooks 	<ul style="list-style-type: none"> Immediate connectivity Cheap devices CARES eligible 	<ul style="list-style-type: none"> Cellular Hotspots: Expensive band-aids Over-reliance on Pre-Paid contracts Delays in Supply Chain Spotty Cellular Coverage Chromebooks dependent on the Internet for best use
Mid-Term	SY 20-21 Doing better in the Fall	<ul style="list-style-type: none"> Hotspots/ Devices Cont'd Promote Low-Income ISP offers Help low-income apply for FCC Lifeline Tribal Subsidy (\$34.25/mo discount) Tribal Wi-Fi ➔ 100+ locations 	<ul style="list-style-type: none"> Wi-Fi: Affordable Wi-Fi: Extends existing Internet Connections Serves many students 	<ul style="list-style-type: none"> Parking lot Wi-Fi: Hot/cold vehicles Lack of transportation Not great space to study Winter is coming fast!
Long-Term Goal	Fall Onward Setting up for the Long Haul	<ul style="list-style-type: none"> Residential Internet Access!! At least 8 Pueblos installing wireless networks before 2021! 	<ul style="list-style-type: none"> Permanent Infrastructure, tribally-controlled Leverages existing fiber backbones Many Tribes can now use licensed spectrum 	<ul style="list-style-type: none"> CARES funding spending deadline of 12/30/20 Not all tribes have fiber backhaul

Connectivity: Previous Efforts Pave the Way

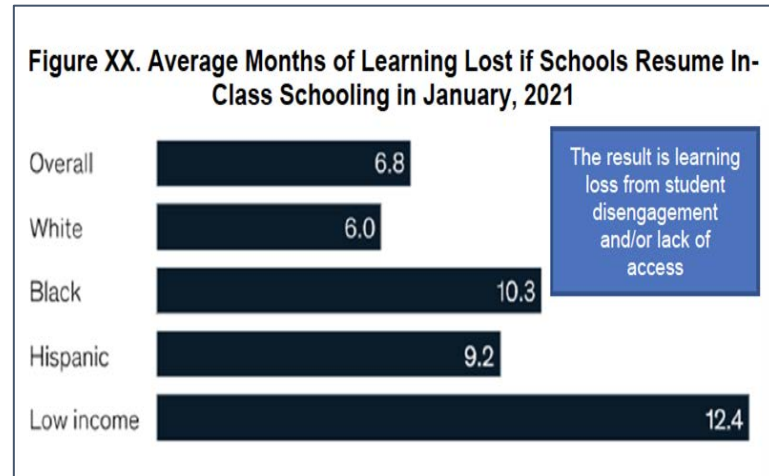
Tribes as Partners – and as Internet Providers

- Since 2008, 11 of 19 Pueblos have constructed fiber optic backbones → Stages home connections
- In 2020, in the first ever FCC Tribal Priority Window for the 2.5 Ghz band, over 400 eligible tribes (of ~475) applied for a free spectrum license
 - 400 Tribes will be building WISPs
 - Or partnering with local tribal and non-Tribal ISPs, such as Sacred Wind in New Mexico, or Mescalero Apache Telecommunications Inc.
- On-Going collaboration with NM State Effort and Carriers
 - Improve coverage on tribal lands through Carrier network investments
 - Deploy Disaster Recovery Assets, such a Cellular on Wheels (CoW)



Low-income schools underperform without an established technology-rich teaching pedagogy

- **NM LFC Report, “Learning Loss Due to COVID-19 Pandemic” (6/10/20)**
 - Low income schools, students suffer most
 - Lack of Broadband Access a factor



COVID-19 Notwithstanding – Educational Priorities

- Professional Development to develop a technology-rich teaching pedagogy
- Homework Gap: In-Home Broadband is Essential
- Connectivity for ALL schools, including the least connected BIE-operated schools
- Creating a NM State Education Network – 23 Other States have them!

Digital Inclusion and K-12 Education: The Impact of COVID-19 on Students and Educators

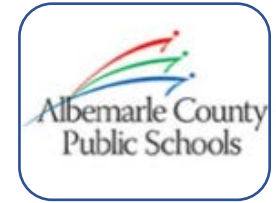
Thank you, Kimball!

Dr. Christine Diggs, Chief
Technology Officer, Albemarle
County Public Schools

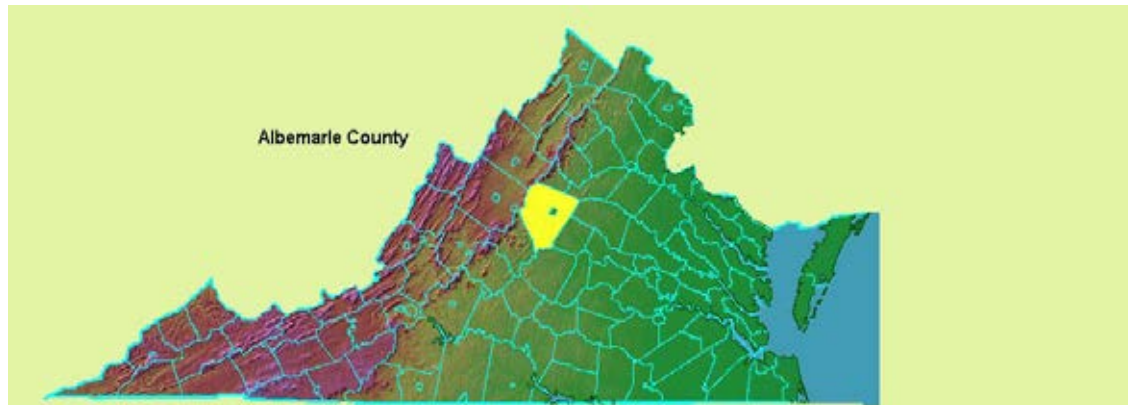


Michael Culp, Director of Information
Technology, Albemarle County Public
Schools





Albemarle County Government & Albemarle County Public Schools: Partnering to Expand Internet Access



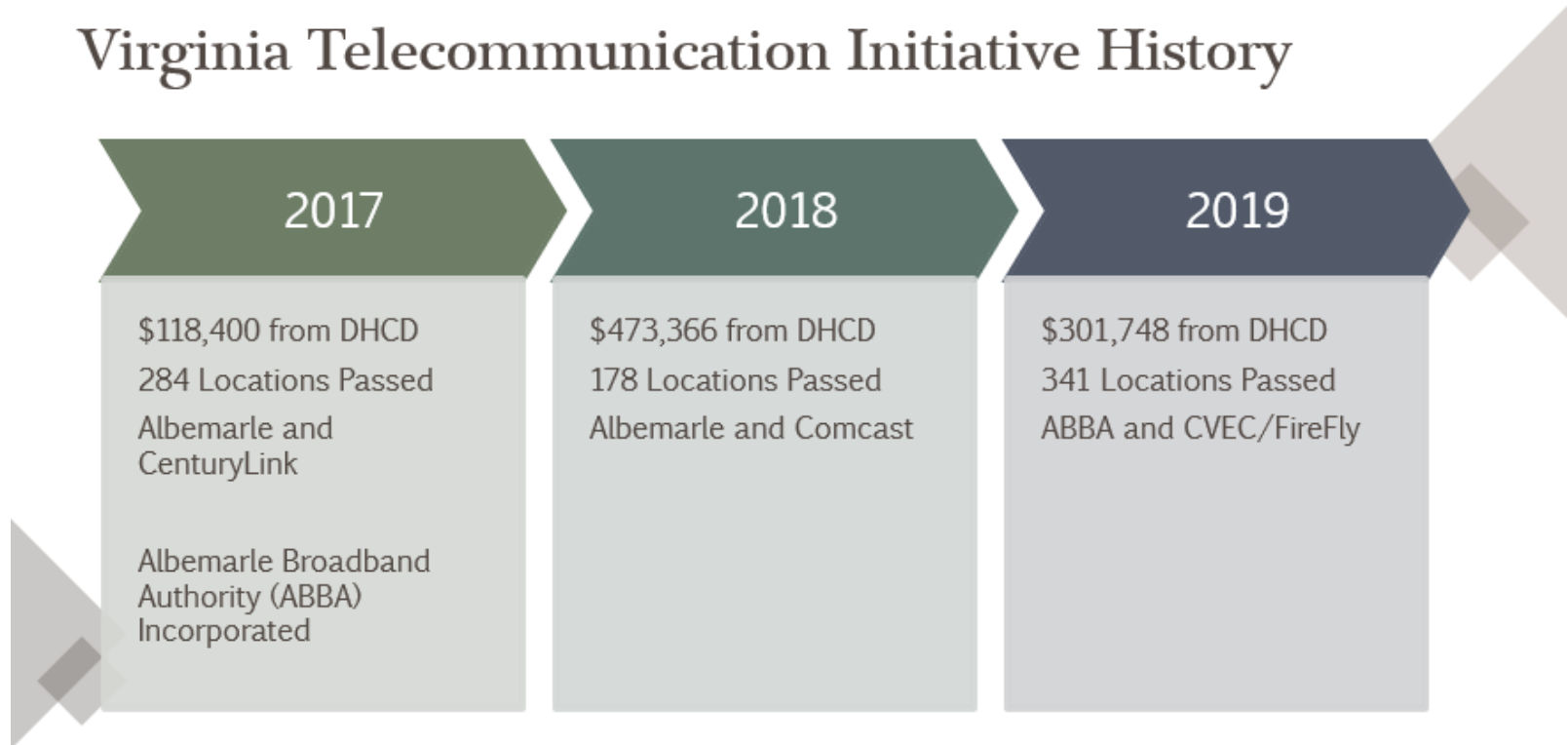
Albemarle County Overview:

- Located in [Central Virginia](#)
- Covers 726 Sq. Miles
- Blue Ridge Mountains, Trees, Rolling Hills
- Established Albemarle Broadband Authority (ABBA) to Expand Connectivity



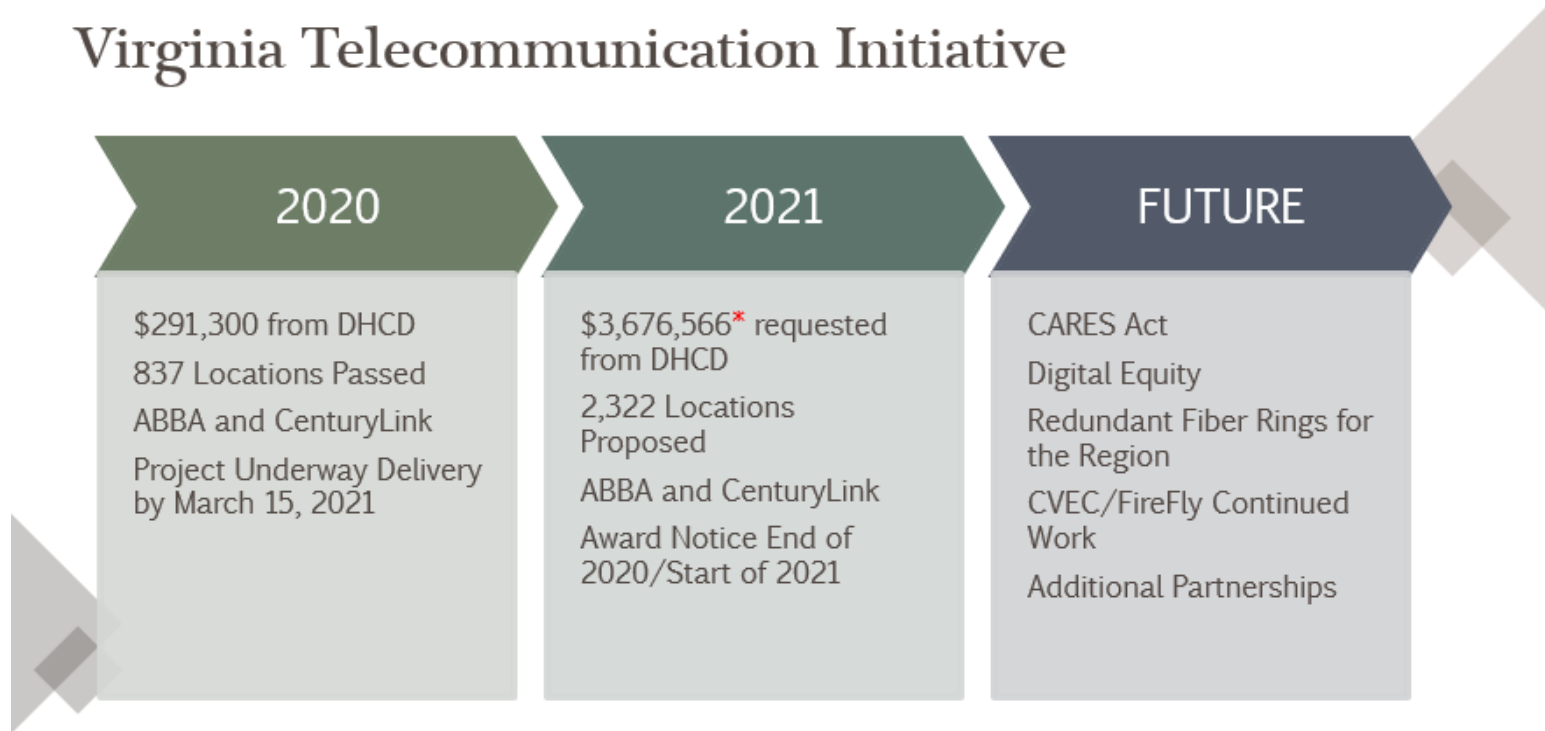
ABBA History & Timeline / 2017-2019

Virginia Telecommunication Initiative History

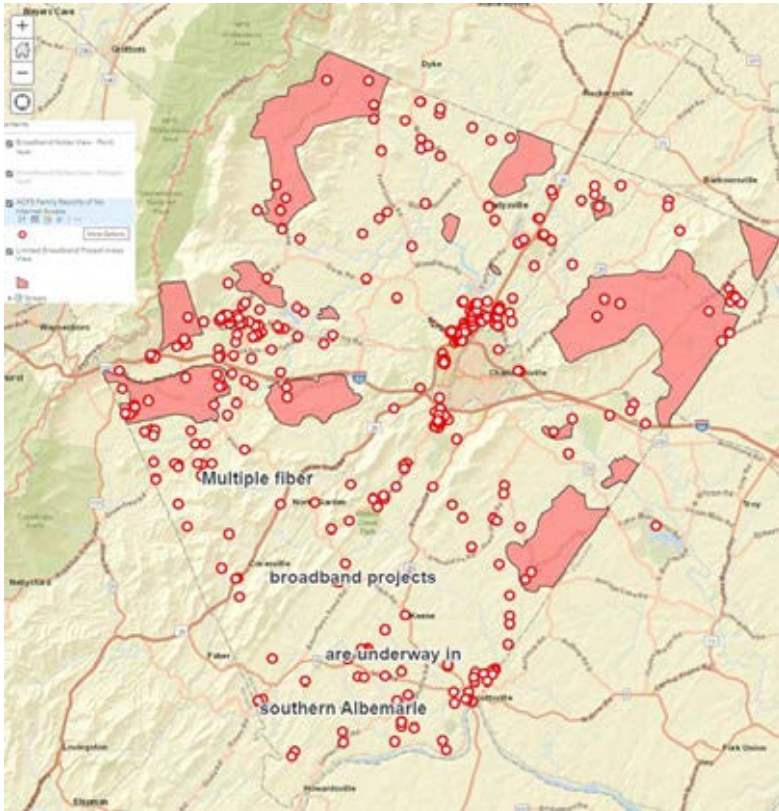


ABBA History & Timeline / 2020 - Future

Virginia Telecommunication Initiative



Our Partnership Goal: Digital Equity and Universal Broadband



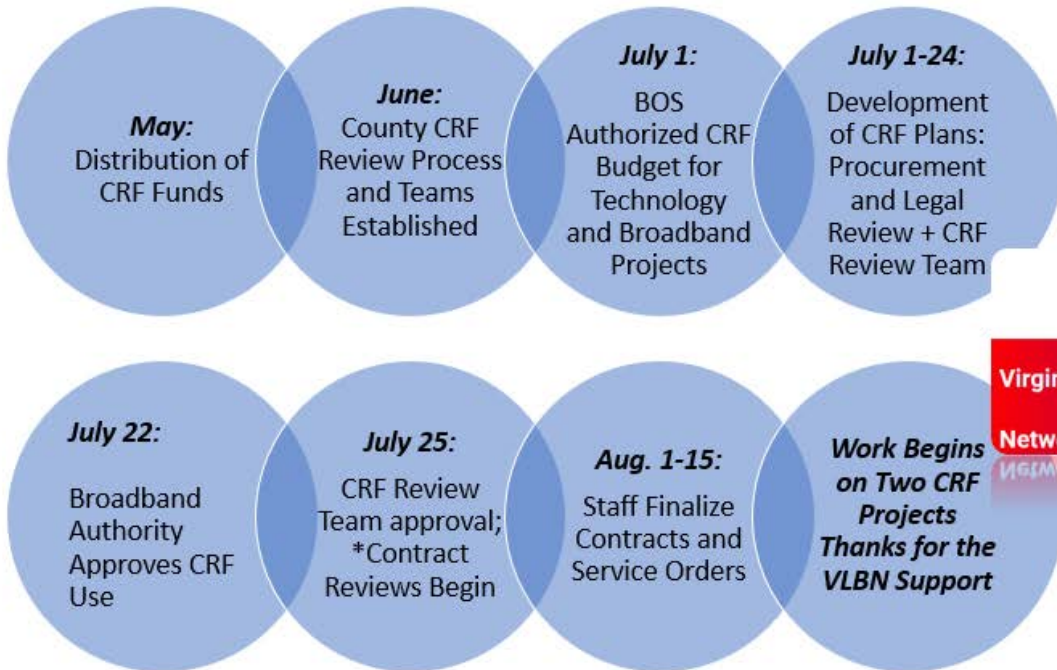
[Countywide survey](#) to report internet access speeds and school division family surveys (online and phone) to determine areas of no or low connectivity

Red Circles: ACPS Family Reported Internet Access Areas

Pink Polygons: Broadband expansion areas

The public has access to this [interactive map](#)

CARES CRF Process



Challenges & Opportunities

Challenges Despite Having Funding

- Capacity to Plan the Work
- Workers to Perform the Work
- Amount of Time Required
- CARES Funding Deadline

Projects Currently Being Planned

- Electric Cooperatives
- Use of ACPS Educational Broadband Service (EBS)
- Community Center Installations
- FireFly Expansion

ABBA partners with Internet Service Providers, Citizens, Business and Governments to advance broadband to every citizen and business in Albemarle County.

Albemarle County Public Schools ([ACPS](#))

- Vision for Student Learning: “All learners believe in their power to **embrace learning**, to **excel**, and to **own their future**.”
- Comprised of 26 buildings surrounding Charlottesville; includes a mix of rural, urban, and suburban schools serving 13,500 students
- Over 30% of the population economically disadvantage and approximately 10% identify as English Language Learners
- Internet connectivity for students at home is a critical component for meeting the learning needs of all students
- ACPS@Home Project established December, 2019



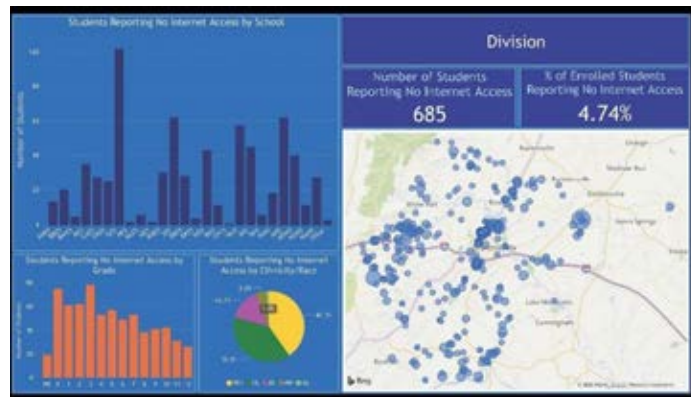
Multi-Prong Approach: ACPS@Home



- Partnering with County Government to expand broadband
- Utilizing public-private partnerships to expand connectivity for students, including Shentel, Kajeet and Comcast
- Established a digital equity position within the technology department by re-allocating an existing position
- Issuing hotspots to students
- Serving as the financial sponsor for providing broadband service from the partner internet service provider (ISP)
- Funding these efforts enabled by leasing the ACPS Educational Broadband Spectrum to Shentel, a commercial internet provider

Determining Needs for Start of School:

- All students in grades 3-12 historically issued an ACPS laptop
- Students in grades K-2 needed to be provided an ACPS iPad (historically had been at a 2 to 1 student to device ratio)
- Teacher Professional Development (PD) needs and [resources](#) for delivering virtual instruction both synchronously and asynchronously
- Data Dashboard illustrating low/no internet data reported by families



Supporting Our Students & Teachers

- ACPS@Home Project greatly accelerated to support 97% virtual learning for fall 2020
- [Return to School website](#) to provide families support and answers to questions and issues; multiple avenues to access technology support
- School based technology staff: 14 Learning Technology Integrators and 15 Technology Support Specialists (TSS)
- Teacher [Professional Development](#) & [Technology Resources Library](#)
- Policies for [students](#) and [staff](#) to support successful use of technology
- Family “Tech Nights” offered by building based technology staff in partnership with teachers
- Family “[Field Guide](#)” to technology in 2 languages



Keeping Our Kids
Safe & Healthy in a
Digital World

A Technology & Digital Citizenship
Field Guide for ACPS Families



Current State & Moving Forward

- Kajeet Wifi “smartspots” – over 1700 active, each using avg of 8GB/day
- Comcast ‘Internet Essentials’ participants – 47 households and growing
- Unprecedented number of support needs being met 7 days/week
- Students with no internet, or internet we cannot improve working on virtual learning in our school buildings
- School WiFi signal extended to school parking lots for community access
- Continuing to address connectivity needs as they arise, realizing these are interim measures until our long term sustainable goal is reached

Shared Goal with Albemarle County Government: Broadband to every citizen and business in Albemarle County

Digital Inclusion and K-12 Education: The Impact of COVID-19 on Students and Educators

Thank you, Christine and Michael!

Joshua Edmonds, Director of Digital Inclusion, City of Detroit



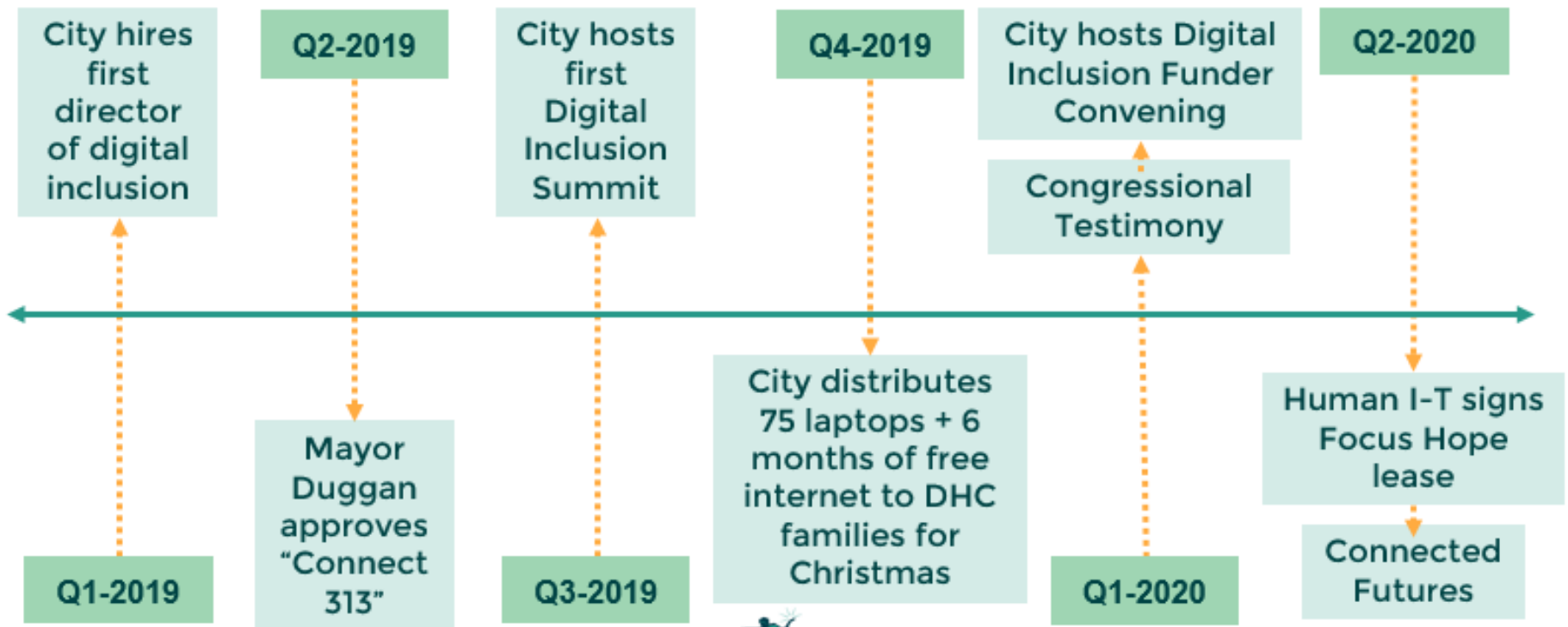


Connect 313 X Connected Futures



POWERED BY DETROIT

2019 + 2020 “Major Wins” Timeline



Data Framing

Topic	%	Note
% W/O Internet Access	29.4%	Internet of any type
% W/O Computers	45%	Desktop/Laptop
% W/O Wired Broadband	52%	High Speed Internet
% Cellular Only	20%	Cell Phone Only Hh
DPSCD *Under connected*	90%	Struggling to maintain internet/computer

Core Function Partners (Outside of Funders)



The Pieces & Parts

Organization	Core Digital Inclusion Role(s)
Detroit Public Schools Community District (DPSCD)	<ul style="list-style-type: none"> • Fundraising • Device User Testing • Data Provider/Aggregate • Account Holder
Human I-T	<ul style="list-style-type: none"> • Family Tech Support • Long-Term Device Replacement Partner • Data Aggregate/Intake
T-Mobile	<ul style="list-style-type: none"> • LTE Provider (6months)
DTE	<ul style="list-style-type: none"> • Project Management • Funding Support
Comcast	<ul style="list-style-type: none"> • Home Internet Provider (Internet Essentials)
City of Detroit	<ul style="list-style-type: none"> • Subject Matter Expert/Chief Advocate • Funder Convener/Co-signer • Sustainability Plan Developer • Ecosystem Owner

Major Funders (100k+)

- Detroit Public School District
- DTE Energy
- Kellogg Foundation
- Dan Gilbert Family Foundation
- TCF Bank
- United Way of Southeast Michigan
- Skillman Foundation
- Ralph C. Wilson Jr. Foundation
- Quicken Loans Community Fund
- JP Morgan Chase
- FCA
- General Motors
- Hudson-Webber Foundation
- Fisher Foundation
- John Kennedy
- Anonymous Donor

Total Raised: \$23 Million on behalf of 51K Students

The Larger Picture



Digital Inclusion and K-12 Education: The Impact of COVID-19 on Students and Educators

Thank you, Joshua!

Digital Inclusion and K-12 Education: The Impact of COVID-19 on Students and Educators

Questions and Comments

- Please type your questions in the Q&A box.
- The slides, transcript, and a recording will be posted on the BroadbandUSA website within 7 days of the webinar.

<https://broadbandusa.ntia.doc.gov/past-event>

Broadband USA

Thank you for attending.

Tune in for the next Practical Conversations Webinar

How Broadband Enhances Local Economies

November 18, 2020

2:00 pm EST

Registration is required for each webinar:

<https://broadbandusa.ntia.doc.gov/event>

BroadbandUSA is available to help communities with their broadband access and digital inclusion efforts

For General Information:



202-482-2048



broadbandusa@ntia.doc.gov



<https://broadbandusa.ntia.doc.gov/resources>

To Request Technical Assistance (TA):



Broadband TA Request Form -
<https://broadbandusa.ntia.doc.gov/ntia-common-content/how-we-can-help>

BBUSA Resources

- [Implementing a Broadband Network Vision: A Toolkit for Local and Tribal Governments](#)
- [Community Broadband Roadmap Toolkit](#)
- [Guide to Federal Funding of Broadband Projects](#)
- [Using Partnerships to Power Smart Cities](#)